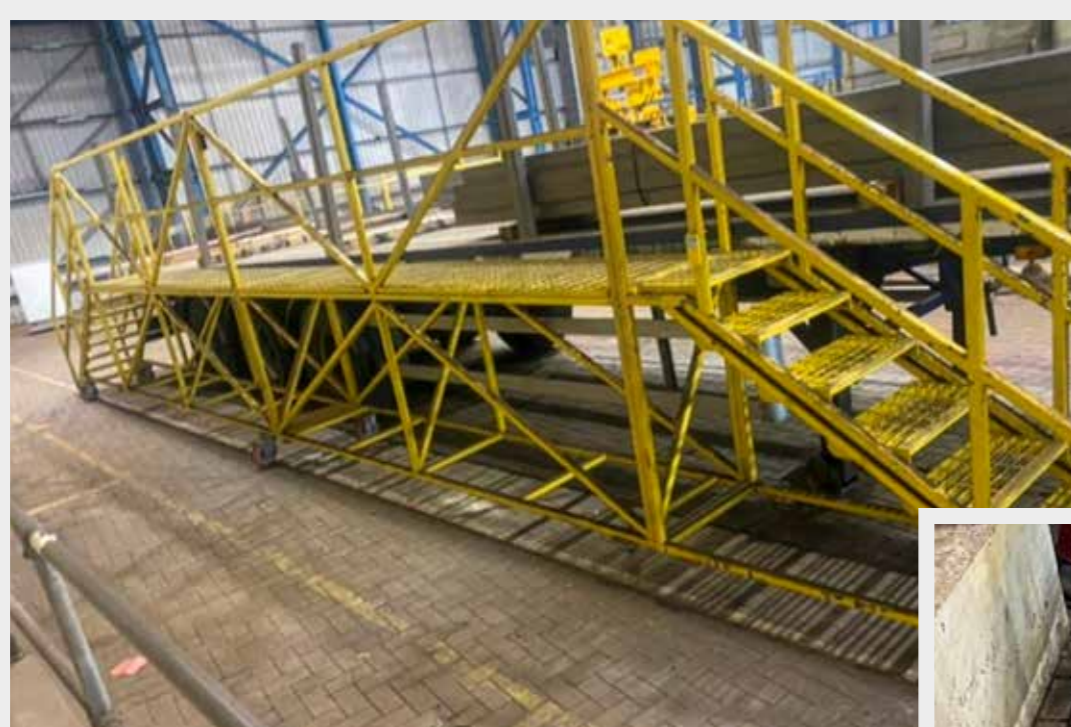


Employer | **Barrett Steel Shoreham**
Designers | **In house – Barrett Steel Shoreham**
Title | **Moving Trailer Loading Platform**

“ The task is now so much simpler and easier to complete, it now takes seconds to move and has taken all the weight and the issues of the platform away. ”

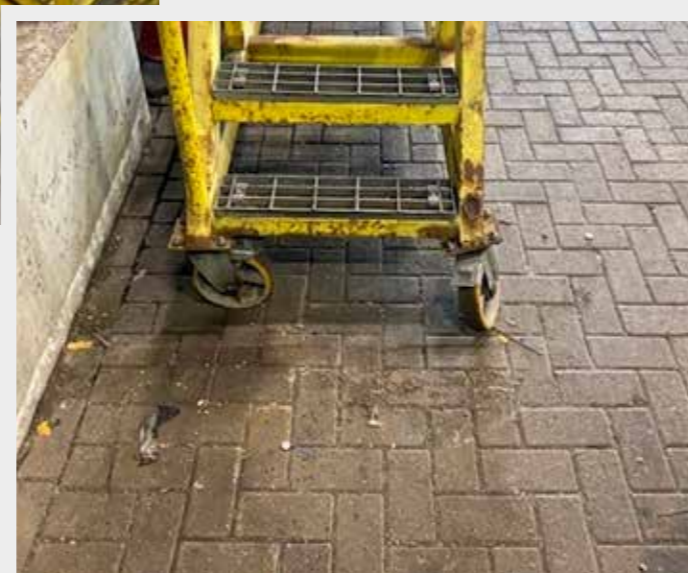


BEFORE



← Between 2 and 4 operators required to manoeuvre loading platform alongside trailer

→ Due to herringbone block paving the wheels of the platform were prone to often becoming stuck



- Previously between 2 and 4 operators were required to manoeuvre the full length platform. The wheels were prone to seize and would often become stuck when trying to move the platforms.
- The platforms weighing up to 600kgs were difficult to manoeuvre due to the herringbone block paving brick flooring which could lead to potential musculoskeletal injuries.
- When pulling one end in, the other end would swing out making it challenging and strenuous for the operator to position the platform tight to the trailer edge.
- This task would be performed by operators at least 4 times per shift at each location.

AFTER



← Rails were sunken into the floor of the warehouse

→ Task is now a 1 operator activity where the platform can be easily moved.



- The operators and the in-house design team were engaged in the designing of a solution and helped with the trialling of the project and giving feedback on any issues or improvements needed.
- A rail track was designed for the platform to run on. A locking drop bolt was included to prevent movement when in use.
- The platform is easily manoeuvred into position by one person. The fall from height risk is reduced.
- The platform has improved safety and efficiency by mitigating the manual handling issues and ensuring no gap between the trailer and platform is maintained.